

We are
Airports



Funding Airport Safety

2023 MAAE Fall Airports Conference

Susan Mowery-Schalk

Director, Great Lakes Region, Airports Division



FAA
Office of Airports




*Providing the Safest,
Most Efficient Aerospace
System in the World.*



FAA NEWSROOM



Federal Aviation Administration 

August 23 at 8:13 AM · 

We're putting substantial resources behind reducing runway incursions awarding more than \$121M in funding to airports across the US. From fixing confusing taxiways to installing new lighting systems, these investments improve safety and flexibility on the airfield. Learn more at <https://bit.ly/44fykXi>.





Prevent Back-Taxi Operations

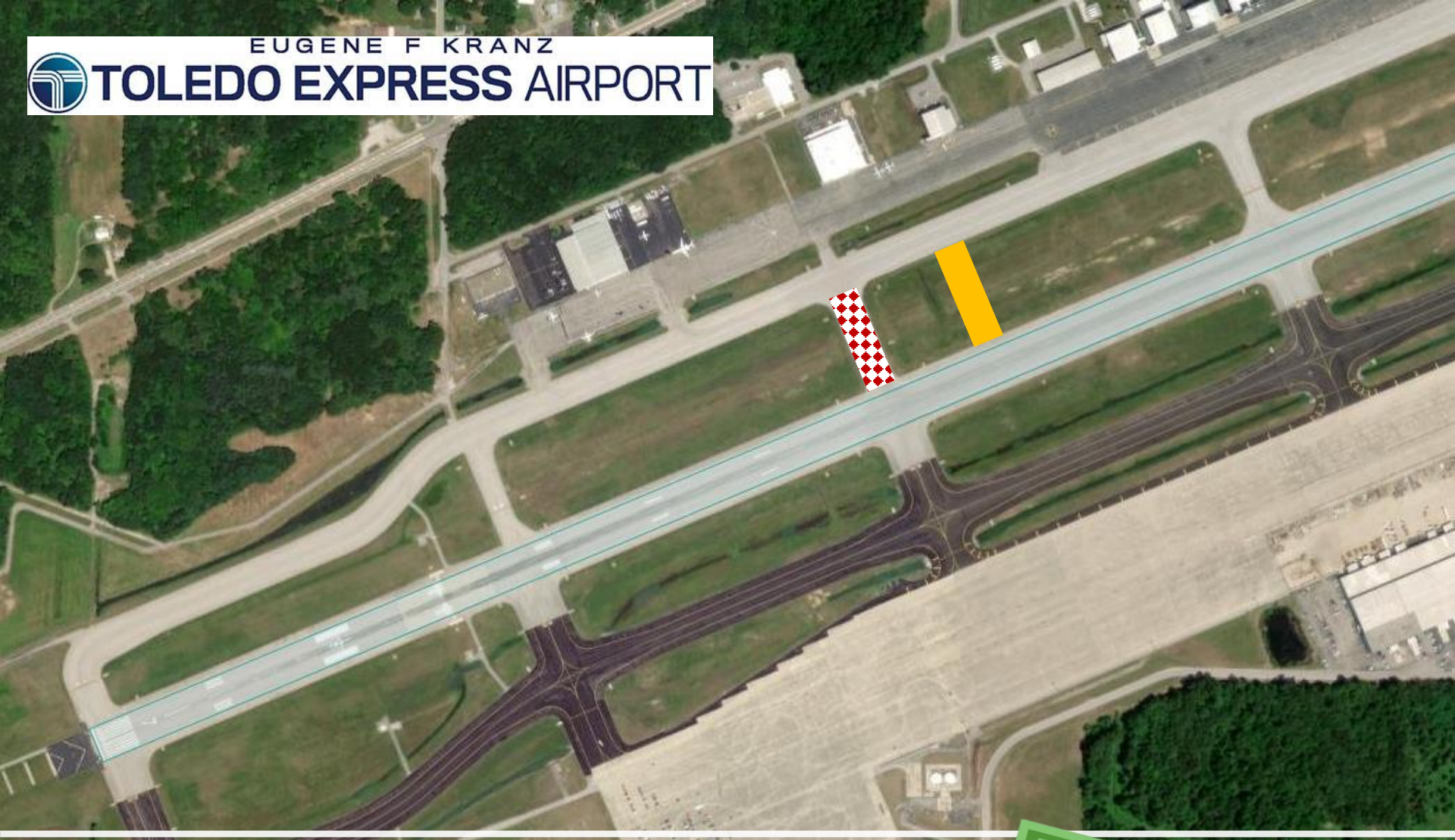


\$27.3 million



EUGENE F KRANZ

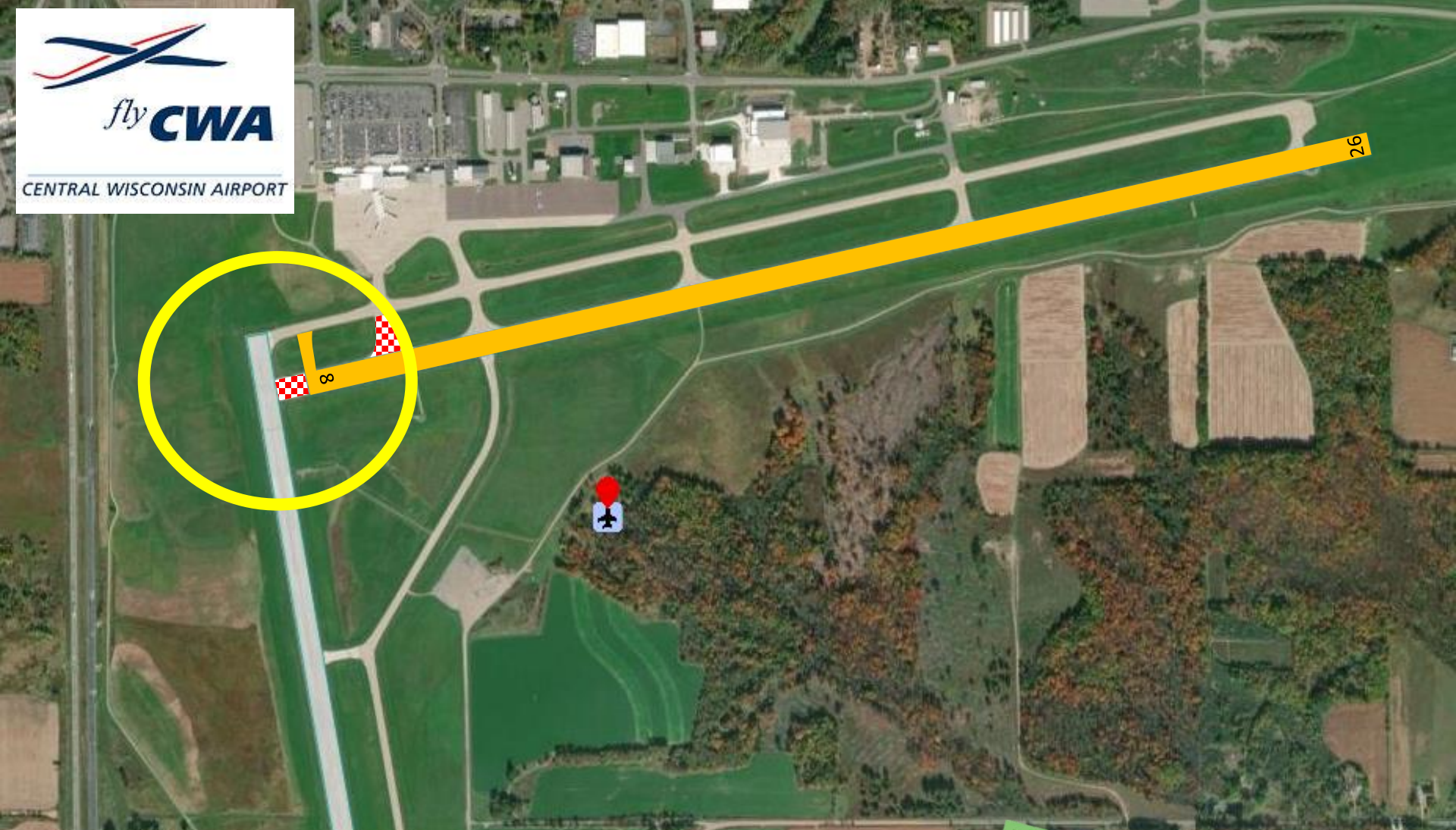
TOLEDO EXPRESS AIRPORT



Direct Access from Apron to Runway



\$1.7 million



Wrong Runway Departure Risk



\$11.3 million



General Aviation Safety Business Plan Goal

Improve Runway Safety Areas at General Aviation Airports

Airport Data and Information Portal

Advanced
Search



The Airport Data and Information Portal (ADIP) helps the Federal Aviation Administration (FAA) collect airport and aeronautical data to meet the demands of the Next Generation National Airspace System.

Guided by Advisory Circulars (ACs), the Airport Sponsor or proponents are key links in the information chain. Use the Airport Data and Information Portal to access airport data and submit changes matching defined business rules. FAA lines of business are notified once data has been submitted and approved.

Register

Request a Public Account and select your role

MyAccess

Login/Register for all @faa.gov users

Public Login

Login for Airports, Consultants, State and other users

Runway Safety Area (RSA) Module

- Runway
- Objects
- History
- Notes

Back To List

TIOGA MUNI (D60)

City: TIOGA
 State: ND
 ADO: DMA
 Region: AGL
 Part 139:

RWY - 11/30
 Length: 102 ft
 Width: 75 ft

Note Data reflects latest information from Aeronautical Information Portal.

Map ESRI World Imagery DMS Unit Feet (FT) Start Clear



Know your RSA!
 Airport Data and Information Portal



www.adip.faa.gov

ADIP RSA Statistics

All (924 +/-) air carrier (Part 139) RSAs entered into ADIP.

538 General Aviation (GA) RSA entered into ADIP to date.

3,662 (+/-) GA RSAs remain to be entered into ADIP to date.

About 70% of the total 5,124 RSAs remain to be entered into ADIP.



Photo Source: Journal Record, Marion County, AL

Airport Data and Information Portal

Advanced
Search



The Airport Data and Information Portal (ADIP) helps the Federal Aviation Administration (FAA) collect airport and aeronautical data to meet the demands of the Next Generation National Airspace System.

Guided by Advisory Circulars (ACs), the Airport Sponsor or proponents are key links in the information chain. Use the Airport Data and Information Portal to access airport data and submit changes matching defined business rules. FAA lines of business are notified once data has been submitted and approved.

Register

Request a Public Account and select your role

MyAccess

Login/Register for all @[faa.gov](https://www.faa.gov) users

Public Login

Login for Airports, Consultants, State and other users

What else can ADIP do for you?

Airport Master Record (AMR)

Authorized source of airport data

Enables airport managers, airport staff and FAA personnel to make airport data changes electronically to the FAA

Supports flight operations with the NAS

Interfaces with FAA applications.

The screenshot displays the ADIP web application interface for the DEL RIO INTL (DRT) project. The interface is organized into several sections:

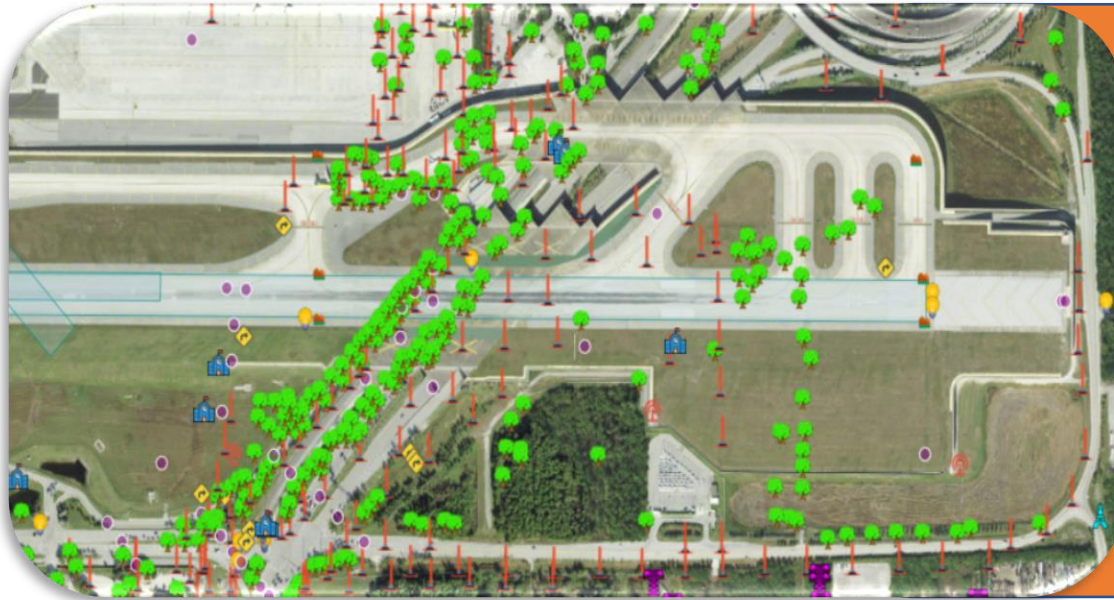
- Header:** Includes the ADIP logo, navigation links (Portal Home, Facility Dashboard, Administration), and user information (Help, Jennifer Dahlstrom).
- Project Summary:** Shows the project name (DEL RIO INTL (DRT)), active NOTAMS, and a progress indicator (In Progress).
- Facility Data:** A sidebar menu with options for General Information, Runways / Helipads, Services & Facilities, Based Aircraft & Operations, and Remarks.
- Main Content Area:** Contains data entry fields for various airport parameters:
 - Touchdown Zone:** Includes fields for 47. Runway Visual Range (RVR) and Runway Visual Value (RVV).
 - 48. Runway End Indicator Lights (REIL):** Includes a Yes/No selection field.
 - 49. Approach Lights:** Features a dropdown menu for PCL (Pavement Classification Number) with a list of options including MALS-1,400 Medium Intensity, ALSAF-3,000 High Int-Seq Fish, ALSF1-2,400 High Int-Seq Fish C1, ALSF2-2,400 High Int-Seq Fish C2/3, MALSR-1,400 Med Int-Seq Fish, MIL_OVRN-Military Overrun, NSTD-Non-Standard, ODALS-Omnidirectional lights, RAIL-Runway Alignment Indicator Lights, RLLS-Runway Lead-In Light System, SALSF-Short Aprch Light-Seq Fish, SALS-Short Aprch Light System, SSALF-Simp Shrt Aprch Light-Seq Fish, SSALR-Simp Shrt Aprch Light-Rwy Light, and SSALS-Simplified Short Aprch Lights.
 - Obstruction Data Per End:** Lists fields for 50. FAR 77 Category, 51. Displaced Threshold, 52. Controlling Obstruction, 53. Obstruction Marked/Lighted, 54. Height Above Runway End, 55. Distance From Runway End, 56. Centerline Offset, and Centerline Offset Direction.
- Right Panel:** Includes a 'View Obstruction location on Map' button and a list of obstructions with fields for description, height, and distance.
- Footer:** Contains action buttons for Save Changes, Error Check, Terminate Project, and Submit Changes.



FAA
Office of Airports

Runway Airspace Management (RAM)

RAM allows airports to view and manage their obstacle data, and interface with the FAA.



Following a runway extension project, the airport operator can utilize RAM to mitigate (i.e. remove) obstacles that no longer exist.



Search Facilities by Loc id...

Point Inventory

RIM Mitigations **4**

Back to My RIM Inventory

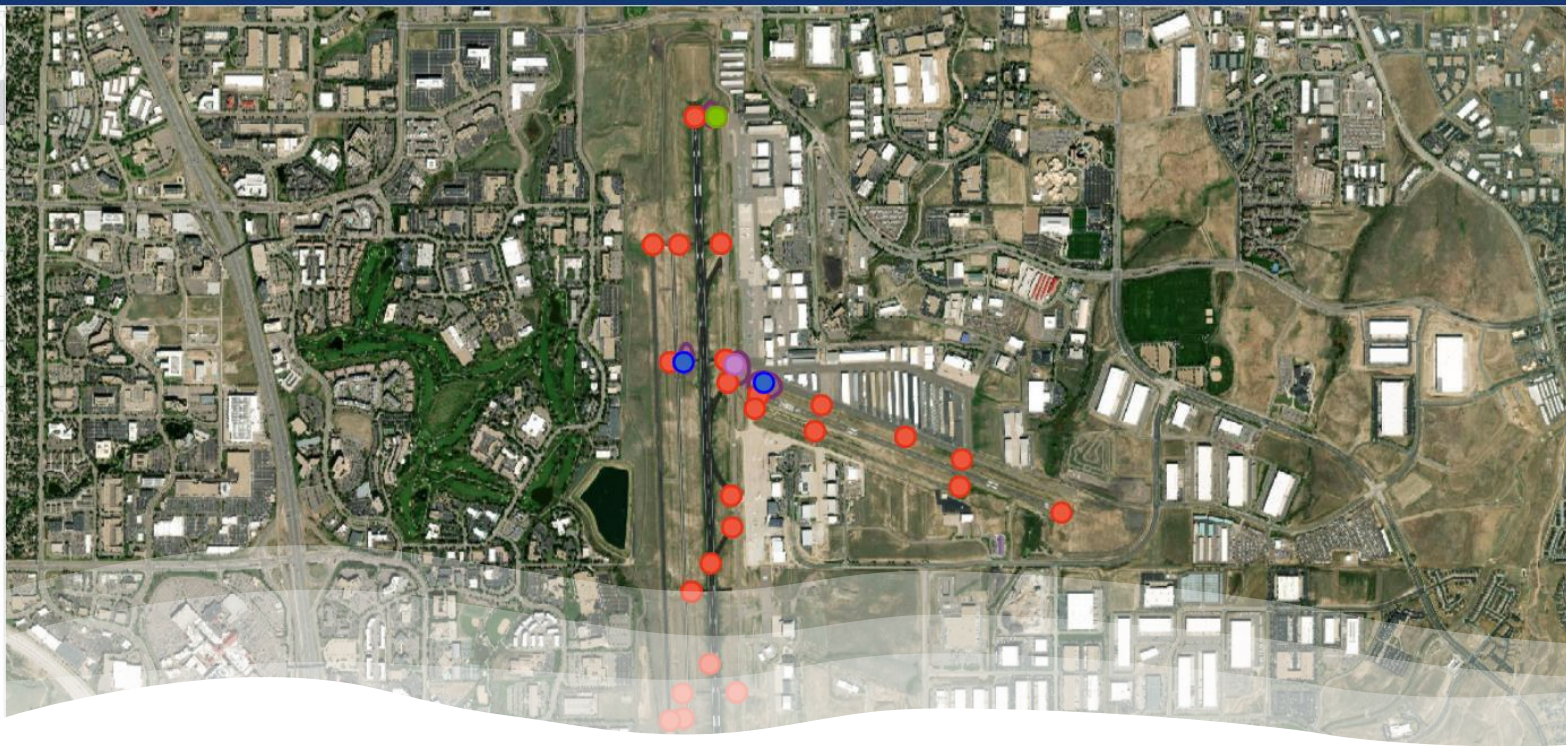
5010

Airport Diagram

RIM Export

Map Digital Globe Imagery

- RIM Locations
- RIM Locations Mitigated
- PTGs
- Mitigated PTGs
- Hot Spots
- Incursions
- + Soots Polygons



Runway Incursion Mitigation (RIM) Data Management Tool

- **FAA user interface for RIM Program management**
 - Geo-reference RIs, RIM locations
 - Track projects; mitigation
 - Yearly validations
- **Industry with limited read-only access**



FAA

**AIRPORT
GRANTS**

=

**AIRPORT
SAFETY**